

March 1, 2020

Eleven O'clock

**First Sunday in Lent
SERVICE FOR THE LORD'S DAY**

GATHERING OF GOD'S PEOPLE

We're delighted that you're here! Whoever you are, wherever you come from, whomever you love, whatever your faith or your doubts, we welcome all whom God welcomes, and that means you.

PRELUDE *O Welt, ich muss dich lassen* J. S Bach

WELCOME AND ANNOUNCEMENTS

INTROIT 425 *Son of God, Whose Heart Is Peace (v. 1)* TANA NKAKAU MARIE

*Son of God, whose heart is peace, Son of God most holy,
to your presence we have come; give us now your love.*

CALL TO WORSHIP

Are you wandering in the wilderness, lost and alone?

The word of God is near us.

Are you frightened of the future, unsure of what to do?

The word of God is near us.

Does the past weigh heavy on you, like a stone that can't be moved?

The word of God is near us, ready to hear and save.

Let us worship God.

*HYMN 166 *Lord, Who throughout These Forty Days* ST. FLAVIAN

***PRAYER OF CONFESSION**

God of the wanderers, you promise us guidance, but we seek direction in other places. God of the listening Word, you stand ready to hear us, but we neglect to pray. God of our forebears, you claim us as your own, but we seek our identity elsewhere. Forgive us, God. Help us to tune out all noise and distractions and focus on you. May we speak to you our truth, listen to you in trust, and find our meaning in being your children. In silence, we turn to you.

*KYRIE 425 *Son of God, Whose Heart Is Peace (v. 2)*

*Take away our sinfulness, evil that imprisons us;
free us from what troubles us; give our souls release.*

***ASSURANCE OF FORGIVENESS**

*GLORIA 447 *We Are Forgiven* WE ARE FORGIVEN

*We are forgiven. We are forgiven.
Thanks be to God. Thanks be to God.
We are forgiven. We are forgiven.
Thanks be to God. Thanks be to God.*

***SHARING THE PEACE OF CHRIST**

The peace of our Lord Jesus Christ be with you all.

And also with you.

Please greet one another with: "The peace of Christ be with you./ And also with you."

PROCLAMATION OF GOD'S WORD

SUNG INVITATION

*Come in, come in and sit down, you are a part of the family.
We are lost and we are found, and we are a part of the family.*

FOCUS ON CHILDREN

Patti Winter

FOCUS ON MUSIC

FPC Kids' Choir

Cherith Parrish

PRAYER FOR ILLUMINATION

FIRST READING

Genesis 2:15-17, 3:1-7

The word of the Lord.

Thanks be to God.

ANTHEM

One in Him

Craig Courtney

THE GOSPEL READING

Matthew 4:1-11

We live not by bread alone, but by every word that comes from God.

Thanks be to God!

SERMON *Talking with Jesus: A Question of Identity* Rev. Terry Hamilton-Poore

DEDICATION OF GOD'S PEOPLE

*HYMN (See insert)

In the Garden

GARDEN

SILENT MEDITATION *If Jesus asked you, "Who are you?" how would you respond? What constitutes your deepest identity? [Please answer in words or images on the white side of the paper provided, and place it in one of the baskets near the exits as you depart.]*

CALL TO PRAYER 469 *Lord, Listen to Your Children Praying*

Lord, listen to your children praying.

Lord, send your Spirit in this place.

Lord, listen to your children praying.

Send us love, send us power; send us grace.

PRAYERS OF THE PEOPLE and THE LORD'S PRAYER

Our Father, who art in heaven, hallowed be thy name.

Thy kingdom come, thy will be done on earth as it is in heaven.

Give us this day our daily bread, and forgive us our debts as we

forgive our debtors; and lead us not into temptation, but deliver

us from evil; for thine is the kingdom and the power and the glory

forever. Amen.

WORSHIP OF GOD WITH TITHES AND OFFERINGS

Part of your offering today is the gift of your presence. Please acknowledge your presence by signing the welcome book at the end of your row. To be directed to our online giving site, please use your smartphone to scan here:



THE OFFERTORY

O My Father

arr. James McGranahan

*DOXOLOGY 607 *Praise God from Whom All Blessings Flow* OLDHUNDREDTH

*Praise God, from whom all blessings flow;
praise Christ, all people here below;
praise Holy Spirit evermore;
praise Triune God, whom we adore. Amen.*

THE SACRAMENT OF COMMUNION

INVITATION TO THE TABLE

THE GREAT THANKSGIVING

The Lord be with you.

And also with you.

Lift up your hearts.

We lift them to the Lord.

Let us give thanks to the Lord our God.

It is right to give God thanks and praise....

O God, Creator of our wilderness world...

We extol his life. Amen. **Amen.**

We lament his death. Amen. **Amen.**

We celebrate his resurrection. Amen. **Amen....**

***COMMUNION OF THE PEOPLE**

To receive, please come forward to the station nearest you, take a piece of bread, dip it in the juice, and eat. The center station contains gluten-free, dairy free bread.

PRAYER AFTER COMMUNION

SENDING GOD'S PEOPLE INTO THE WORLD

*HYMN 775 *I Want Jesus to Walk with Me* WALK WITH ME

***CHARGE AND BENEDICTION**

*SUNG BENEDICTION 543 *God, Be the Love to Search and Keep Me (v. 5)*

Christ in the eyes of all who see me,

Christ in the ears that hear my voice,

Christ in the hearts of all who know me:

O Christ, surround me. O Christ, surround me.

*POSTLUDE *Trumpet Tune* Drummond Wolff

*Please stand as you are able.

WE WELCOME VISITORS Your presence enriches our community. We hope the service held meaning and beauty for you. To learn more about opportunities for spiritual growth and service, visit us on the web at www.fpcbham.org.

IF YOU ARE SEEKING A CHURCH HOME, our Session meets on the *first Sunday of the month* in the Chapel following the 11:00 worship service to welcome new members. If you are looking for a faith community, we hope you will make First your home.

FOR CHILDREN: Children's bags and bulletins are available in the Narthex (ushers can locate them for you). Please empty and return the bags after worship. We love having kids in worship, but the following alternatives are also available: *Nursery* is provided for infants (at least six weeks old) and toddlers. After the *Focus on Children*, children ages 3-7 go to the balcony, where they experience a little of what worship is like while doing learning activities related to the scripture with coloring, puzzles, books, children's bulletins and more. When the sacraments of the Lord's Supper or Baptism are celebrated, children return to the sanctuary. We invite those in second grade and above to remain in the sanctuary and participate in the entire worship service.

LET THE BELLS PLAY! Our 37-bell Rushton Memorial Carillon was the first such instrument in Birmingham and the third in the United States, when installed in 1924.

PRAYER REQUESTS Please use the Prayer Request and Information Change cards, found in the pew rack, to relay information to the church office. Print your name and any other information you may need to relay to the office and place it in the offering plate.

SERMONS are available from our website at www.fpcbham.org.

The **LITURGIST** for today is Scott Pierce.

Have you remembered the church in your will?



FIRST PRESBYTERIAN CHURCH
BIRMINGHAM

2100 4TH AVENUE NORTH
BIRMINGHAM, ALABAMA 35203
205-322-5469
www.fpcbham.org

MISSION CENTERS OF FIRST PRESBYTERIAN CHURCH

FIRST LIGHT, INC. is a mission center of FPC, giving shelter and support services for homeless women and children. If you would like to help, speak to our pastors or call Ruth Crosby, Executive Director (323-4277). First Light's website: www.firstlightshelter.org

RUTH AND NAOMI SENIOR OUTREACH (RNSO) has as its mission to become spiritual companions to isolated older adults and to call, equip, and support others to do so as well. Contact chaplain@rutbandnaomi.org.

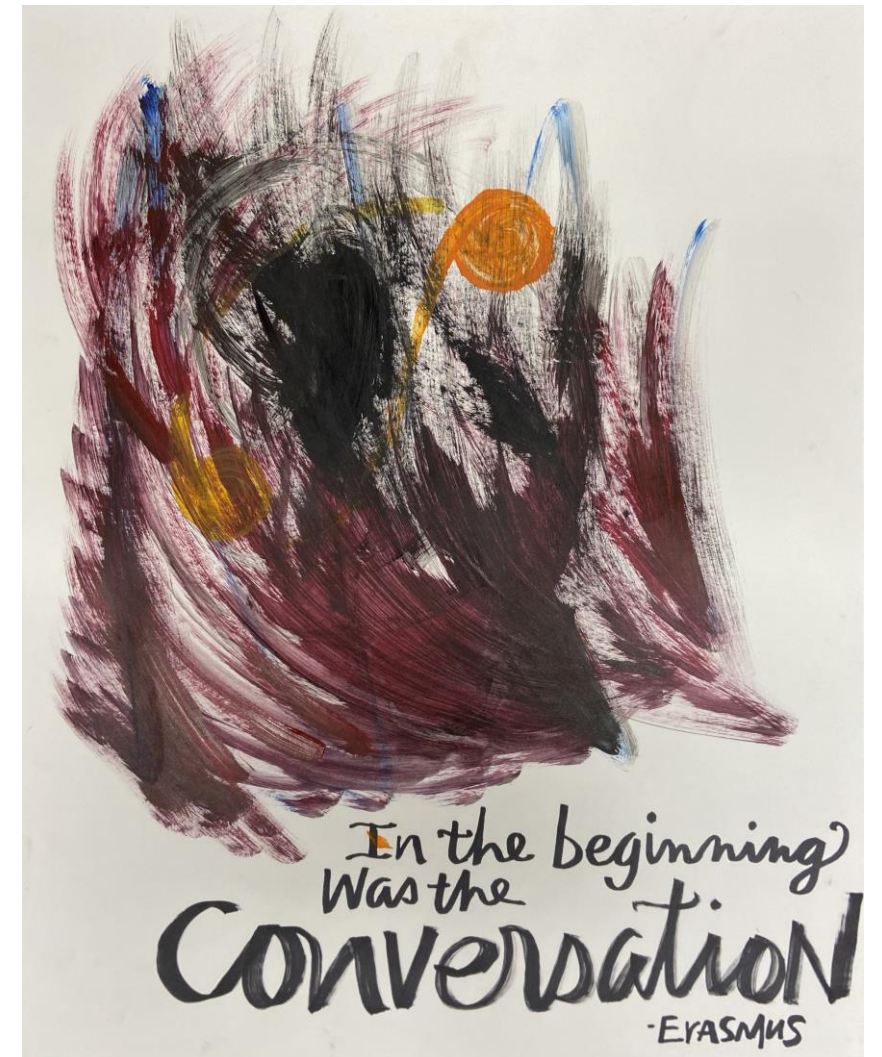
THE RUSHTON CHILD DEVELOPMENT CENTER provides quality childcare in a loving, nurturing environment – accredited by NAEYC and licensed by the Department of Human Resources. Call the CDC office at 322-8310. The Center's website is www.eprdc.com

FAITH IN ACTION ALABAMA, a faith-based community-organizing effort FPC shares with faith communities throughout the city, works to improve quality of life for all our citizens. Faith in Action is a PICO network affiliate and can be reached at daniel@faal.org.

FIRST PRESBYTERIAN CHURCH FOUNDATION provides support to First Presbyterian Church for the maintenance and upkeep of this historic sacred space built in 1889. 10% of the Foundation's annuity payment aids mission selected by session. Contact Mark Aldridge for more information.

THE REV. TERRY HAMILTON-POORE, Pastor and Head of Staff
THE REV. CATHERINE GOODRICH, Associate Pastor
THE REV. PATRICK HARLEY, Parish Associate
MS. PATTI WINTER, Director of Christian Education
DR. HYE SOOK JUNG, Director of Music/Organist
JEFF HAIRRELL, Music Coordinator
MS. ROBIN VINES, Carillonist
MS. EMILY BURT, Youth Director
MS. LAURA H. ROBERTSON, Office Administrator
MS. DEBBIE BOONE, Bookkeeper
MS. KANDIE WILEY, Sexton
THE REV. DR. ROBERT S. CRUTCHFIELD, Pastor Emeritus

Encountering God and One Another in Lent



Art by Rafael Vallejo, 2008

FIRST PRESBYTERIAN CHURCH
BIRMINGHAM