

5<sup>th</sup> Sunday after Epiphany  
SERVICE FOR THE LORD'S DAY

**WELCOME**

Whatever your religious background and however you have come to be here, we are honored that you have chosen to worship today at First Presbyterian Church. We hope you feel welcome, inspired, and strengthened by the power of God to meet the challenges of your daily life.

**GATHERING OF GOD'S PEOPLE**

*We begin worship with the musical prelude and lighting of the candles, reminding us of Christ's presence with us. Please use this time to make the transition from getting here to being here.*

PRELUDE *Prelude* C. Saint-Saens

WELCOME AND ANNOUNCEMENTS

CHORAL INTROIT

CALL TO WORSHIP

One: When everything we try comes up empty, Jesus says:

**Many: "Go deeper!"**

One: When we cannot seem to find kindred spirits, Jesus says:

**Many: "Look wider!"**

One: And so, because Jesus calls us, we leave the safety of the ordinary,

**Many: following with boldness in God's new way.**

\*HYMN 32 *I Sing the Mighty Power of God* ELLACOMBE

\*PRAYER OF CONFESSION

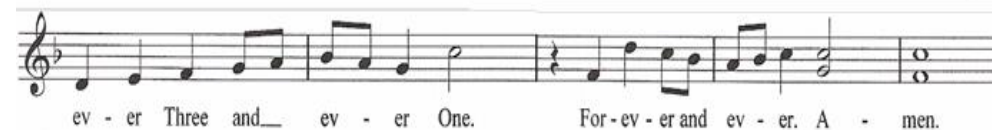
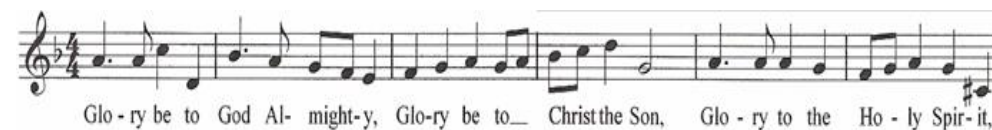
**O God, we ask for new life, but we keep looking in old places. We long for greater community, but we seek out the same people. We would rather wring our hands over what is wrong than create the change that we desire. Forgive our helplessness and our lack of vision, we pray. Renew our hope for the better world that you have in mind, and fill us with the courage to be your partners in its creation, as we open our hearts to you in silence...**

\*KYRIE 576 *Lord, Have Mercy* SINGAPURA



\*ASSURANCE OF FORGIVENESS

\*GLORIA



**PROCLAMATION OF GOD'S WORD**

FOCUS ON CHILDREN

Patti Winter

PRAYER FOR ILLUMINATION

OLD TESTAMENT READING

Isaiah 6:1-13

One: The word of the Lord.

**All: Thanks be to God.**

SINGING THE PSALM

Psalm 138

Hymn 334

EPISTLE READING

1 Corinthians 15:1-11

One: The word of the Lord.

**All: Thanks be to God.**

ANTHEM

*Israel, hoffe auf den Herrn (Cantata #131)* J.S. Bach

*Israel hopes in the Lord, for mercy is with the Lord, and plenteous redemption*

GOSPEL READING

Luke 5:1-11

One: The word of the Lord.

**All: Thanks be to God.**

SERMON

*Creative Chaos* Rev. Terry Hamilton-Poore

**DEDICATION OF GOD'S PEOPLE**

\*HYMN 751 *From the Nets of Our Labor* HAMILTON

\*AFFIRMATION OF FAITH *A Brief Statement of Faith, section 2* (Hymnal, p. 37)

PRAYERS OF THE PEOPLE

One: The Lord be with you.

**All: And also with you.**

One: Lift up your hearts.

**All: We lift them to the Lord.**

THE LORD'S PRAYER

**Our Father, who art in heaven, hallowed be thy name. Thy kingdom come, thy will be done, on earth as it is in heaven. Give us this day our daily bread; and forgive us our debts, as we forgive our debtors; and lead us not into temptation, but deliver us from evil. For thine is the kingdom and the power and the glory, forever. Amen.**

CHORAL RESPONSE

**WORSHIP OF GOD WITH TITHES AND OFFERINGS**

*Part of your offering today is the gift of your presence. Please acknowledge your presence by signing the welcome book at the end of your row. If you would like to make a gift electronically, scan here to be directed to our online giving site:*



OFFERTORY

*I Need Thee Every Hour*

Robert Lowry

\*THE DOXOLOGY

*Praise God, from whom all blessings flow;  
Praise God, all creatures here below;  
Praise God for all that love has done;  
Creator, Christ and Spirit, One. Amen.*

\*PRAYER OF THANKSGIVING

**SENDING GOD'S PEOPLE INTO THE WORLD**

\*HYMN 765 *May the God of Hope Go with Us* ARGENTINA

\*CHARGE AND BENEDICTION

\*CHORAL BENEDICTION

\*POSTLUDE *Postlude in F major* Bulier

\*Please stand as you are able.

## ANNOUNCEMENTS

**LET THE BELLS PLAY!** Our 37-bell Rushton Memorial Carillon was the first such instrument in Birmingham and the third in the United States, when installed in 1924.

**WE WELCOME GUESTS** and celebrate that you are worshiping with us today. Your presence enriches our community. We hope the service held meaning and beauty for you. If you are returning to a distant home, we wish you the Lord's grace and a safe journey. However, if you live in the area and are seeking a faith community, we hope you will return soon so that we may get to know you better. To learn more about opportunities for spiritual growth and service, visit us on the web at [www.fpcbham.org](http://www.fpcbham.org). May God's peace and blessing be with you.

**IF YOU ARE SEEKING A CHURCH HOME**, our Session meets on the *first Sunday of the month* in the Chapel following the 11:00 worship service to welcome new members. If you are looking for a faith community, we hope you will make First your home.

**FOR CHILDREN:** Children's bags and bulletins are available in the Narthex (ushers can locate them for you). Please empty and return the bags after worship. While all children are welcome in worship, the following alternatives also are available: *Nursery* is provided for infants (at least six weeks old) and toddlers. After the *Focus on Children*, children ages 3-7 will go to the balcony, where they experience a little of what worship is like while doing learning activities related to the scripture with coloring, puzzles, books, children's bulletins and more. When the sacraments of the Lord's Supper or Baptism are celebrated, children will return to the sanctuary. We invite those in second grade and above to remain in the sanctuary and participate in the entire worship service.

**PRAYER REQUESTS** Please use the Prayer Request and Information Change cards, found in the pew rack, to relay information to the church office. Print your name and any other information you may need to relay to the office and place it in the offering plate.

**SERMONS** are available from our website at [www.fpcbham.org](http://www.fpcbham.org).

The **LITURGIST** for today is Scott Pierce.

## MISSION CENTERS OF FIRST PRESBYTERIAN CHURCH

**FIRST LIGHT, INC.** is a mission center of FPC, giving shelter and support services for homeless women and children. If you would like to help, speak to our pastors or call Ruth Crosby, Executive Director (323-4277). First Light's website: [www.firstlightshelter.org](http://www.firstlightshelter.org)

**RUTH AND NAOMI SENIOR OUTREACH (RNSO)** has as its mission to become spiritual companions to isolated older adults and to call, equip, and support others to do so as well. Contact [chaplain@ruthandnaomi.org](mailto:chaplain@ruthandnaomi.org).

**THE RUSHTON CHILD DEVELOPMENT CENTER** provides quality childcare in a loving, nurturing environment – accredited by NAEYC and licensed by the Department of Human Resources. Call the CDC office at 322-8310. The Center's website is [www.eprcdc.com](http://www.eprcdc.com)

**FAITH IN ACTION ALABAMA**, a faith-based community-organizing effort FPC shares with faith communities throughout the city, works to improve quality of life for all our citizens. Faith in Action is a PICO network affiliate and can be reached at [daniel@faal.org](mailto:daniel@faal.org).

**FIRST PRESBYTERIAN CHURCH FOUNDATION** provides support to First Presbyterian Church for the maintenance and upkeep of this historic sacred space built in 1889. 10% of the Foundation's annuity payment aids mission selected by session. Contact Mark Aldridge for more information.

THE REV. CATHERINE GOODRICH, Pastor and Acting Head of Staff

THE REV. CATHERINE OLIVER, Interim Associate Pastor

THE REV. JIM STANFORD, Parish Associate

MS. PATTI WINTER, Director of Christian Education

DR. TIMOTHY THOMAS, Director of Music

DR. HYE SOOK JUNG, Organist

MS. EMILY BURT, Youth Director

MR. OWEN BLOMELEY, Administrator

MS. LAURA H. ROBERTSON, Office Administrator

MS. DEBBIE BOONE, Bookkeeper

MS. KANDIE WILEY, Sexton

THE REV. DR. ROBERT S. CRUTCHFIELD, Pastor Emeritus

*Have you remembered the church in your will?*