

February 3, 2019

Eleven O'clock

4th Sunday after Epiphany
SERVICE FOR THE LORD'S DAY

WELCOME

Whatever your religious background and however you have come to be here, we are honored that you have chosen to worship today at First Presbyterian Church. We hope you feel welcome here and inspired. May you be strengthened by the power of God to meet the challenges of your daily life.

GATHERING OF GOD'S PEOPLE

We begin worship with the musical prelude and lighting of the candles, reminding us of Christ's presence with us. Please use this time to make the transition from getting here to being here.

PRELUDE *O Gott, du frommer Gott* J. Brahms

GREETINGS and ANNOUNCEMENTS

CHORAL INTROIT

CALL TO WORSHIP

One: From the very beginning, God calls us.

Many: **God sets us apart with intention and purpose.**

One: We are gathered, though many, as one body:

Many: **courageously seeking to be Christ's body in the world.**

One: Saved, supported, sustained by God's love,

Many: **we celebrate the start of a new chapter for our church.**

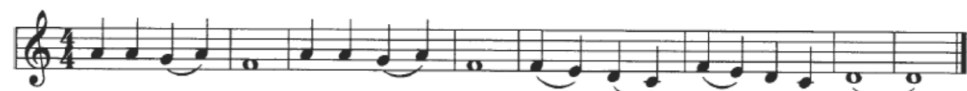
All: **Let us worship God together!**

*PROCESSIONAL HYMN 401 *Here in This Place (Gather Us In)* GATHER US IN

*PRAYER OF CONFESSION

God of all goodness, we admit to you and one another that we have not always lived lives of love. We have been impatient and unkind, selfish and resentful. We have conformed to the world around us, instead of seeking to transform it through compassion and generosity. Forgive our many faults, gracious One, and heal our hearts that we might love you completely. Hear now our silent prayers of confession...

*KYRIE 576 *Lord, Have Mercy* SINGAPURA



Lord, have mer - cy. Christ, have mer - cy. Lord, have mer - cy on us.

*ASSURANCE OF PARDON

*GLORIA



Glo - ry be to God Al - might - y, Glo - ry be to Christ the Son, Glo - ry to the Ho - ly Spir - it,



ev - er Three and ev - er One. For - ev - er and ev - er. A - men.

PROCLAMATION OF GOD'S WORD

FOCUS ON CHILDREN

Patti Winter

PRAYER FOR ILLUMINATION

OLD TESTAMENT READING

Jeremiah 1:4-10

One: The word of the Lord.

All: **Thanks be to God.**

GOSPEL READING

Luke 4:21-30

One: The word of the Lord.

All: **Thanks be to God.**

ANTHEM

Author of Life Divine

Cecilia McDowall

EPISTLE READING

1 Corinthians 13:1-13

One: The word of the Lord.

All: **Thanks be to God.**

SERMON

Beautiful, Broken, and Beloved Rev. Terry Hamilton-Poore

DEDICATION OF GOD'S PEOPLE

*HYMN 693 *Though I May Speak* GIFT OF LOVE

*AFFIRMATION OF FAITH from the Confession of 1967

We believe that God's sovereign love is a mystery beyond the reach of our minds.

Human thought ascribes to God superlatives of power, wisdom and goodness. But God reveals love in Jesus Christ by showing power in the form of a servant, wisdom in the folly of the cross, and goodness in receiving sinful people. The power of God's love in Christ to transform the world discloses that the Redeemer is the Lord and Creator who made all things to serve the purpose of love.

WORSHIP OF GOD WITH TITHES AND OFFERINGS**

*Part of your offering today is the gift of your presence.
Please acknowledge your presence by signing the welcome book at the end of your row.*

OFFERTORY *Pastorale* arr S. Wolff

THE SACRAMENT OF COMMUNION

INVITATION TO THE TABLE

THE GREAT THANKSGIVING

One: The Lord be with you.

All: **And also with you.**

One: Lift up your hearts.

All: **We lift them to the Lord.**

One: Let us give thanks to the Lord our God.

All: **It is right to give God thanks and praise....**

One: We join our voices with the faithful of every time and place who forever give glory to your name:

All: **Holy, holy, holy Lord, God of power and might. Heaven**

and earth are full of your glory. Hosanna in the highest. Blessed is the One who comes in the name of the Lord. Hosanna in the highest....

One: Great is the mystery of faith:

All: **Christ has died, Christ is risen, Christ will come again.**

LORD'S PRAYER

Our Father who art in heaven, hallowed be thy name. Thy kingdom come, thy will be done, on earth as it is in heaven. Give us this day our daily bread; and forgive us our debts, as we forgive our debtors; and lead us not into temptation, but deliver us from evil. For thine is the kingdom and the power and the glory, forever. Amen.

CHORAL RESPONSE

BREAKING OF THE BREAD & POURING OF THE CUP

COMMUNION OF THE PEOPLE

We are serving communion by intinction today. There are two stations at the front of the sanctuary. Please come to the station nearest you, take a piece of bread, dip it into the cup, and eat. Udi's gluten free, dairy free bread is in a small dish on each plate.

PRAYER AFTER COMMUNION

SENDING GOD'S PEOPLE INTO THE WORLD

LITANY OF BEGINNINGS

Leader: Dear friends, today Terry begins her work among us as our pastor.

Congregation: **Terry and Sam, we welcome you into the family of this congregation.**

Leader: More than a year of thinking and praying and searching has brought us to this moment.

Congregation: **We ask God's blessing as we begin this new stage of ministry together.**

Pastor: I receive your welcome with joy. Together, may we build a home where all can learn and grow together in love.

*HYMN 766 *The Church of Christ Cannot Be Bound* MC KEE

*CHARGE and BENECTION

*CHORAL BENECTION

*POSTLUDE *Crown Him Lord of All* arr. James Ellor

*Please stand as you are able.

**If you would like to make a gift electronically, scan here to be directed to our online giving site:



ANNOUNCEMENTS

WE WELCOME GUESTS and celebrate that you are worshiping with us today. Your presence enriches our community. We hope the service held meaning and beauty for you. If you are returning to a distant home, we wish you the Lord's grace and a safe journey. However, if you live in the area and are seeking a faith community, we hope you will return soon so that we may get to know you better. To learn more about opportunities for spiritual growth and service, visit us on the web at www.fpcbham.org. May God's peace and blessing be with you.

IF YOU ARE SEEKING A CHURCH HOME, our Session meets on the *first Sunday of the month* in the Chapel following the 11:00 worship service to welcome new members. If you are looking for a faith community, we hope you will make First your home.

FOR CHILDREN: Children's bags and bulletins are available in the Narthex (ushers can locate them for you). Please empty and return the bags after worship. While all children are welcome in worship, the following alternatives also are available: *Nursery* is provided for infants (at least six weeks old) and toddlers. After the *Focus on Children*, children ages 3-7 will go to the balcony, where they experience a little of what worship is like while doing learning activities related to the scripture with coloring, puzzles, books, children's bulletins and more. When the sacraments of the Lord's Supper or Baptism are celebrated, children will return to the sanctuary. We invite those in second grade and above to remain in the sanctuary and participate in the entire worship service.

OPPORTUNITY INSERT Please use the Opportunity Insert to relay information to the church office, including reservations for church events. Print your name and any other information you may need to relay to the office, fold the insert and put it in the offering plate.

LET THE BELLS PLAY! Our 37-bell Rushton Memorial Carillon was the first such instrument in Birmingham and the third in the United States, when installed in 1924.

SERMONS are available from our website at www.fpcbham.org.

The **LITURGIST** for today is Scott Pierce.

MISSION CENTERS OF FIRST PRESBYTERIAN CHURCH

FIRST LIGHT, INC. is a mission center of FPC, giving shelter and support services for homeless women and children. If you would like to help, speak to our pastors or call Ruth Crosby, Executive Director (323-4277). First Light's website: www.firstlightshelter.org

RUTH AND NAOMI SENIOR OUTREACH (RNSO) has as its mission to become spiritual companions to isolated older adults and to call, equip, and support others to do so as well. Contact chaplain@ruthandnaomi.org.

THE RUSHTON CHILD DEVELOPMENT CENTER provides quality childcare in a loving, nurturing environment – accredited by NAEYC and licensed by the Department of Human Resources. Call the CDC office at 322-8310. The Center's website is www.eprcdc.com

FAITH IN ACTION ALABAMA, a faith-based community-organizing effort FPC shares with faith communities throughout the city, works to improve quality of life for all our citizens. Faith in Action is a PICO network affiliate and can be reached at daniel@faal.org.

FIRST PRESBYTERIAN CHURCH FOUNDATION provides support to First Presbyterian Church for the maintenance and upkeep of this historic sacred space built in 1889. 10% of the Foundation's annuity payment aids mission selected by session. Contact Mark Aldridge for more information.

THE REV. TERRY HAMILTON-POORE, Pastor and Head of Staff

THE REV. CATHERINE GOODRICH, Associate Pastor

THE REV. JIM STANFORD, Parish Associate

MS. PATTI WINTER, Director of Christian Education

DR. TIMOTHY THOMAS, Director of Music

DR. HYE SOOK JUNG, Organist

MS. ROBIN VINES, Carillonneur

MS. EMILY BURT, Youth Director

MR. OWEN BLOMELEY, Facility Manager

MS. LAURA H. ROBERTSON, Office Administrator

MS. DEBBIE BOONE, Bookkeeper

MS. KANDIE WILEY, Sexton

THE REV. DR. ROBERT S. CRUTCHFIELD, Pastor Emeritus

Have you remembered the church in your will?