

The Baptism of the Lord SERVICE FOR THE LORD'S DAY

WELCOME

Whatever your religious background and however you have come to be here, we are honored that you have chosen to worship today at First Presbyterian Church. We hope you feel welcome, inspired, and strengthened by the power of God to meet the challenges of your daily life.

GATHERING OF GOD'S PEOPLE

We begin worship with the musical prelude and lighting of the candles, reminding us of Christ's presence with us. Please use this time to make the transition from getting here to being here.

PRELUDE *Choral Prelude on 'Horbury'* Alec Rowley

WELCOME AND ANNOUNCEMENTS

CHORAL INTROIT

CALL TO WORSHIP

One: The voice of God echoes over the water.

Many: **The Spirit moves over the face of the deep.**

One: The son of God is called Beloved.

Many: **By the waters of baptism, we are united as one family and named children, in whom God delights.**

One: Let us worship God.

*HYMN 484 *Out of Deep, Unordered Water* RUSTINGTON

*PRAYER OF CONFESSION

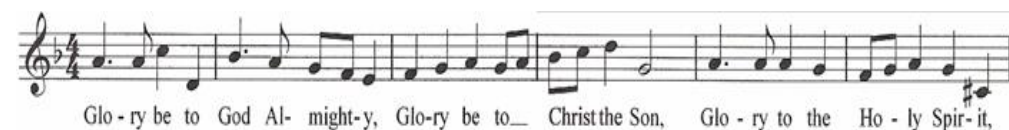
Merciful God, in baptism you offer reconciliation and new life, yet we are estranged from one another and from you. We hold grudges and are hesitant to show welcome to those with whom we disagree. In your great love, forgive and reclaim us, then help us to reclaim our baptism that we might receive your Spirit with joy. We open our hearts to you in silent prayer...

*KYRIE 576 *Lord, Have Mercy* SINGAPURA



*ASSURANCE OF FORGIVENESS

*GLORIA



PROCLAMATION OF GOD'S WORD

FOCUS ON CHILDREN

Patti Winter

PRAYER FOR ILLUMINATION

OLD TESTAMENT READING

Isaiah 43:1-7

One: The word of the Lord.

All: **Thanks be to God.**

ANTHEM

Creator Of the Stars of Night

arr. John Scott

NEW TESTAMENT READINGS

Luke 3:15-17, 21-22; Acts 8:14-17

One: The word of the Lord.

All: **Thanks be to God.**

SERMON

Water

Rev. Cat Goodrich

DEDICATION OF GOD'S PEOPLE

*HYMN 488 *I Was There to Hear Your Borne Cry* WATERLIFE

*AFFIRMATION OF FAITH *A New Creed from the United Church of Canada*

We are not alone, we live in God's world.

**We believe in God: who has created and is creating,
who has come in Jesus, the Word made flesh, to reconcile
and make new,
who works in us and others by the Spirit.**

We trust in God.

We are called to be the Church:

**to celebrate God's presence,
to live with respect in Creation,
to love and serve others,
to seek justice and resist evil,
to proclaim Jesus, crucified and risen, our judge and our
hope.**

In life, in death, in life beyond death, God is with us.

We are not alone.

Thanks be to God.

PRAYERS OF THE PEOPLE

One: The Lord be with you.

All: **And also with you.**

One: Lift up your hearts.

All: **We lift them to the Lord.**

THE LORD'S PRAYER

Our Father, who art in heaven, hallowed be thy name. Thy kingdom come, thy will be done, on earth as it is in heaven. Give us this day our daily bread; and forgive us our debts, as we forgive our debtors; and lead us not into temptation, but deliver us from evil. For thine is the kingdom and the power and the glory, forever. Amen.

CHORAL RESPONSE

WORSHIP OF GOD WITH TITHES AND OFFERINGS**

Part of your offering today is the gift of your presence.

Please acknowledge your presence by signing the welcome book at the end of your row.

OFFERTORY

Pastoral

J.S.Bach

*THE DOXOLOGY

*Praise God, from whom all blessings flow;
Praise God, all creatures here below;
Praise God for all that love has done;
Creator, Christ and Spirit, One. Amen.*

*PRAYER OF THANKSGIVING

SENDING GOD'S PEOPLE INTO THE WORLD

*HYMN 48

Rain Down

RAIN DOWN

*CHARGE AND BENEDICTION

*CHORAL BENEDICTION

*POSTLUDE

Organ Sonata No.4

F. Mendelssohn

*Please stand as you are able.

**If you would like to make a gift electronically, scan here to be directed to our online giving site:



ANNOUNCEMENTS

LET THE BELLS PLAY! Our 37-bell Rushton Memorial Carillon was the first such instrument in Birmingham and the third in the United States, when installed in 1924.

WE WELCOME GUESTS and celebrate that you are worshiping with us today. Your presence enriches our community. We hope the service held meaning and beauty for you. If you are returning to a distant home, we wish you the Lord's grace and a safe journey. However, if you live in the area and are seeking a faith community, we hope you will return soon so that we may get to know you better. To learn more about opportunities for spiritual growth and service, visit us on the web at www.fpcbham.org. May God's peace and blessing be with you.

IF YOU ARE SEEKING A CHURCH HOME, our Session meets on the *first Sunday of the month* in the Chapel following the 11:00 worship service to welcome new members. If you are looking for a faith community, we hope you will make First your home.

FOR CHILDREN: Children's bags and bulletins are available in the Narthex (ushers can locate them for you). Please empty and return the bags after worship. While all children are welcome in worship, the following alternatives also are available: *Nursery* is provided for infants (at least six weeks old) and toddlers. After the *Focus on Children*, children ages 3-7 will go to the balcony, where they experience a little of what worship is like while doing learning activities related to the scripture with coloring, puzzles, books, children's bulletins and more. When the sacraments of the Lord's Supper or Baptism are celebrated, children will return to the sanctuary. We invite those in second grade and above to remain in the sanctuary and participate in the entire worship service.

PRAYER REQUESTS Please use the Prayer Request and Information Change cards, found in the pew rack, to relay information to the church office. Print your name and any other information you may need to relay to the office and place it in the offering plate.

SERMONS are available from our website at www.fpcbham.org.

The **LITURGIST** for today is Mark Aldridge.

MISSION CENTERS OF FIRST PRESBYTERIAN CHURCH

FIRST LIGHT, INC. is a mission center of FPC, giving shelter and support services for homeless women and children. If you would like to help, speak to our pastors or call Ruth Crosby, Executive Director (323-4277). First Light's website: www.firstlightshelter.org

RUTH AND NAOMI SENIOR OUTREACH (RNSO) has as its mission to become spiritual companions to isolated older adults and to call, equip, and support others to do so as well. Contact chaplain@ruthandnaomi.org.

THE RUSHTON CHILD DEVELOPMENT CENTER provides quality childcare in a loving, nurturing environment – accredited by NAEYC and licensed by the Department of Human Resources. Call the CDC office at 322-8310. The Center's website is www.eprcdc.com

FAITH IN ACTION ALABAMA, a faith-based community-organizing effort FPC shares with faith communities throughout the city, works to improve quality of life for all our citizens. Faith in Action is a PICO network affiliate and can be reached at daniel@faal.org.

FIRST PRESBYTERIAN CHURCH FOUNDATION provides support to First Presbyterian Church for the maintenance and upkeep of this historic sacred space built in 1889. 10% of the Foundation's annuity payment aids mission selected by session. Contact Mark Aldridge for more information.

THE REV. CATHERINE GOODRICH, Pastor and Acting Head of Staff

THE REV. CATHERINE OLIVER, Interim Associate Pastor

THE REV. JIM STANFORD, Parish Associate

MS. PATTI WINTER, Director of Christian Education

DR. TIMOTHY THOMAS, Director of Music

DR. HYE SOOK JUNG, Organist

MS. EMILY BURT, Youth Director

MR. OWEN BLOMELEY, Administrator

MS. LAURA H. ROBERTSON, Office Administrator

MS. DEBBIE BOONE, Bookkeeper

MS. KANDIE WILEY, Sexton

THE REV. DR. ROBERT S. CRUTCHFIELD, Pastor Emeritus

Have you remembered the church in your will?